

# RETAIL SPACE AVAILABLE

## SHOPPES OF SOUTH ELGIN II

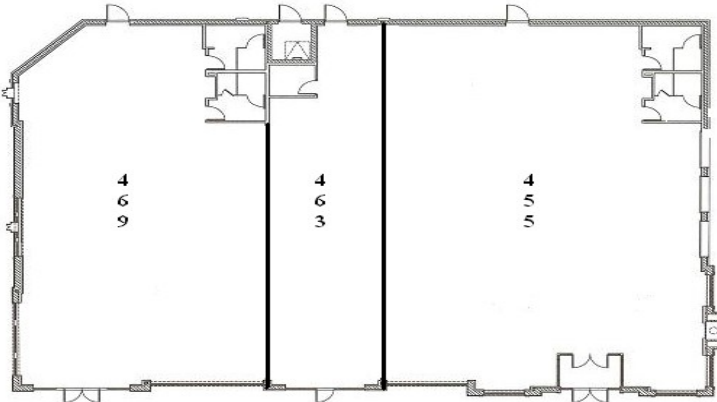
Redington Drive, South Elgin, IL 60177

- 10,000 sq. ft. retail center
- Location: Thornwood & Randall Rd., one stoplight from the major intersection at McDonald and Randall
- Great Anchor Stores



### Kane County Rapid Growth Market

Shoppes of South Elgin II adds to the rapid growth of Kane County! This 10,000 sq. ft. retail center was built in 2004 and has easy access and street frontage exposure. Major tenants include American Mattress and Jersey Mike's. The center is adjacent to McDonald's and Harris Bank.



### RETAIL SPACE

ADDRESS	SIZE	TENANT
455	4,652	Coronado Mexican
463	1,539	Stretch Lab
467	1,696	May's Lounge
469	1,778	Jersey Mike's

### DEMOGRAPHICS

#### POPULATION

- 1 mile 1,178
- 3 miles 33,492
- 5 miles 96,592

#### MEDIAN HOUSEHOLD

- | INCOME    |           |
|-----------|-----------|
| • 1 mile  | \$103,503 |
| • 3 miles | \$86,413  |
| • 5 miles | \$84,342  |

#### NUMBER OF HOUSEHOLDS

- 1 mile 359
- 3 miles 11,224
- 5 miles 32,486

