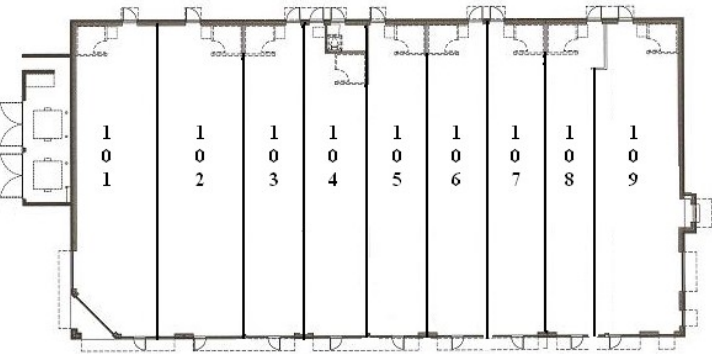


# RETAIL SPACE AVAILABLE

## SHOPPES OF PLANO

7010 Burroughs, Plano, IL 60545

- 22,000 sq. ft.; two buildings of retail/office center
- Location: high traffic corner of US Rte 34 & Chilton Way
- Will divide



### RETAIL SPACE

ADDRESS	SIZE	TENANT
101	1,600	Vacant
102	1,200	Vacant
103	1,200	Vacant
104	1,200	Vacant
105	1,200	NUR Trading
106	1,196	Vacant
107	1,200	Vacant
108-109	2,350	Dunkin Donuts



### Illinois Residential & Commercial Hot Spot

Two buildings of retail/office center comprising 22,000 sq. ft. Built in 2008, this complex is located at the corner of US Rte 34 and Chilton Way. Offers exclusive frontage and easy access. Drive through facility is available.

### DEMOGRAPHICS

#### POPULATION

- 1 mile 5,030
- 3 miles 7,269
- 5 miles 19,982

#### MEDIAN HOUSEHOLD

##### INCOME

- 1 mile \$59,450
- 3 miles \$58,285
- 5 miles \$59,639

#### NUMBER OF HOUSEHOLDS

- 1 mile 1,725
- 3 miles 2,447
- 5 miles 7,049

