

RETAIL SPACE AVAILABLE

INLINE SHOPPES OF NAPERVILLE

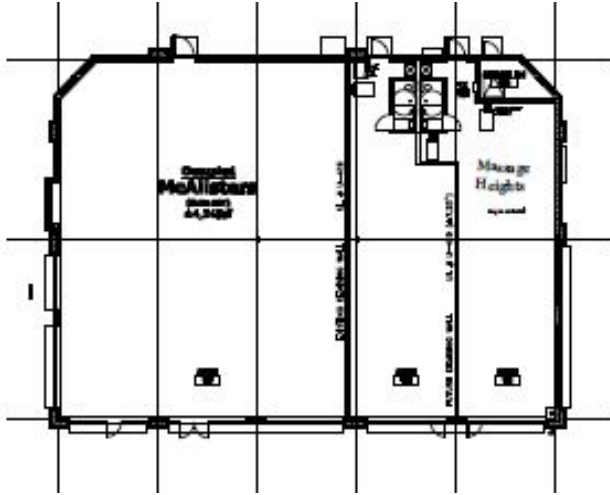
2911 95TH Street, Naperville, IL 60564

- 7,317 sq. ft. Retail Center
- Location: 95th Street and Rte 59
- High Traffic Corner
- Great Anchor Stores



Busy Center with Great Walking Traffic

Boasts approximately 7,300 sq. ft. This center was built in 2015 and is a powerhouse shopping experience. Major tenants include McAllister's deli and Massage Heights. Please view the site plan and building photos!



RETAIL SPACE

ADDRESS	SIZE	TENANT
101-103	3,007	Hand & Stone Massage
105-109	4,310	McAllister's Deli

DEMOGRAPHICS

POPULATION

- 1 mile 8,670
- 3 miles 61,940
- 5 miles 153,933

MEDIAN HOUSEHOLD INCOME

- 1 mile \$114,511
- 3 miles \$111,259
- 5 miles \$99,125

NUMBER OF HOUSEHOLDS

- 1 mile 2,760
- 3 miles 19,182
- 5 miles 51,591

