

RETAIL SPACE AVAILABLE

SHOPPES OF ADDISON I RETAIL CENTER

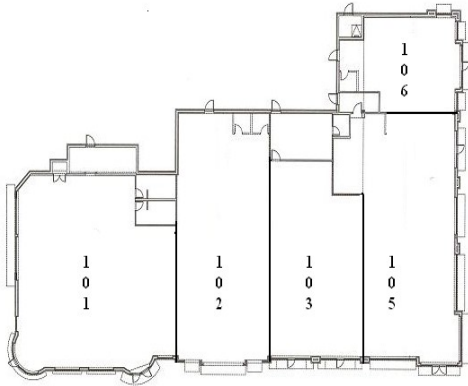
1600 W Lake Street, Addison, IL 60101

- 16,000 sq. ft. Retail Center
- Location: Lake St, (Rt 20) just west of Foxdale Dr on the north side of Lake St
- Across from Marcus Theaters



Situated in Addison's Entertainment District

16,000 sq ft retail center built in 2003. Located at 1600 West Lake Street in Addison's suburban entertainment district. Perfectly situated frontage on high traffic road and easy access to all major expressways. Major tenants include Chase Bank, Panera Bread and it's adjacent Starbucks. Busy center with great walking traffic.



RETAIL SPACE

ADDRESS	SIZE	TENANT
101	4,893	Panera Bread
102	2,817	Rios Sud America
103	1,438	Middle Terranean
104	1,489	UPS Store
105	3,746	Verizon Wireless
106	1,532	Dr. Vitale

DEMOGRAPHICS

POPULATION

- 1 mile 11,143
- 3 miles 29,022
- 5 miles 251,783

MEDIAN HOUSEHOLD INCOME

- 1 mile \$78,232
- 3 miles \$70,184
- 5 miles \$72,317

NUMBER OF HOUSEHOLDS

- 1 mile 3,707
- 3 miles 27,819
- 5 miles 89,605

