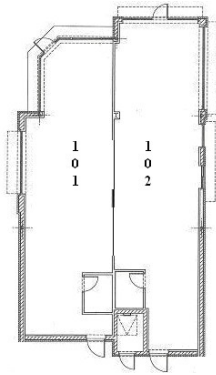


RETAIL SPACE AVAILABLE

SHOPPES OF ADDISON II RETAIL CENTER

1590 W Lake Street, Addison, IL 60101

- 3,200 sq. ft. Retail Center
- Location: Lake St, (Rt 20) just west of Foxdale Dr on the north side of Lake St
- Across from Marcus Theaters



Busy Center with Great Walking Traffic

Built in 2003, this 3,200 sq ft upscale center is another stand out in the city’s entertainment corridor. With a drive thru Starbucks, the center conveys a rare, synergistic feel.

RETAIL SPACE

ADDRESS	SIZE	TENANT
101	1641	Starbucks
102	1549	Lacey’s Place

DEMOGRAPHICS

POPULATION		MEDIAN HOUSEHOLD INCOME	
• 1 mile	11,143	• 1 mile	\$78,232
• 3 miles	29,022	• 3 miles	\$70,184
• 5 miles	251,783	• 5 miles	\$72,317
NUMBER OF HOUSEHOLDS			
• 1 mile	3,707		
• 3 miles	27,819		
• 5 miles	89,605		

