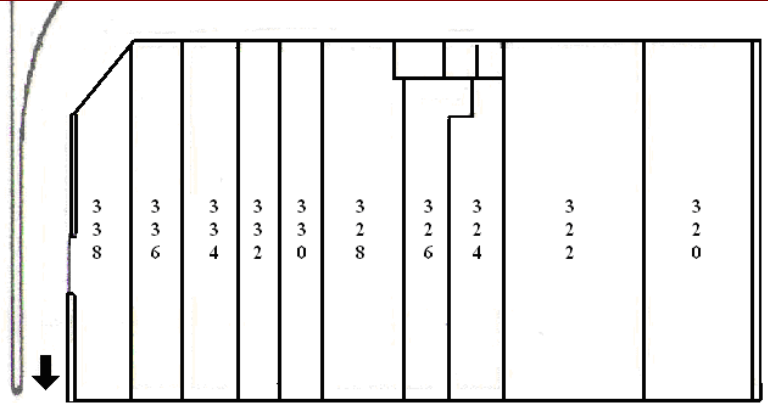


**Shoppes of South Elgin I**  
**320-338 Randall Road**  
**South Elgin, IL 60177**  
*A GrecoReggi Properties Project*



**RETAIL SPACE AVAILABLE**



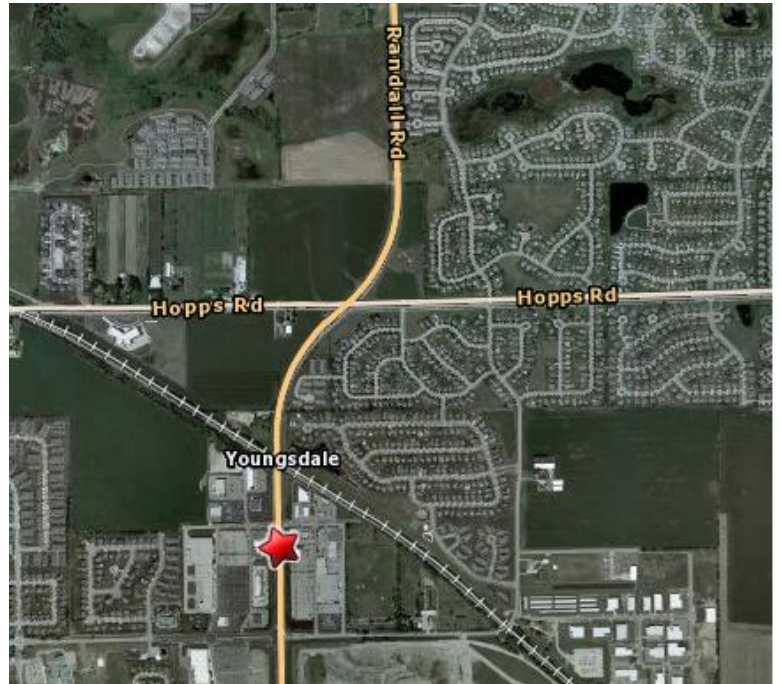
- 21,000 Sq. Ft. Retail Center
- Location: Major Randall Road location with easy access and excellent street frontage
- Anchor Store: Kohl's Department Store and Drive-through Starbucks

**RETAIL SPACE**

<u>ADDRESS</u>	<u>SIZE</u>	<u>TENANT</u>
320	3,425	Giordano's Pizza
322	4,418	Panera Bread
324	1,524	Certified Phone Repair
326	1,532	Supercuts
328	2,506	Luxottica
330	1,273	Custom Countertop
332	1,302	Perfect Nails & Toes
<b>334</b>	<b>1,608</b>	<b>VACANT</b>
336	1,722	Smoke House
338	1,685	Starbucks

Shoppes of South Elgin I, South Elgin, IL – 21,000 sq. ft. retail center built in 2003. Located at 320 Randall Road in the hub of Kane Country's major residential development, the property is positioned on a major street with easy access and excellent street frontage.

**Great Anchors!**



[CLICK HERE FOR MAP AND DIRECTIONS](#)

**DEMOGRAPHICS**

POPULATION	
• 1 mile	2,409
• 3 mile	36,686
• 5 mile	103,237
NUMBER OF HOUSEHOLDS	
• 1 mile	767
• 3 mile	12,383
• 5 mile	34,068
MEDIAN HOUSEHOLD INCOME	
• 1 mile	\$82,015
• 3 mile	\$80,854
• 5 mile	\$79,705

**FOR MORE INFORMATION CONTACT**

Leasing Management  
 630-580-0372

Greco Reggi Randall I, LLC  
 1301 Schiferl Rd., Bartlett, IL 60103  
 P: 630-580-0372 F: 630-221-0584