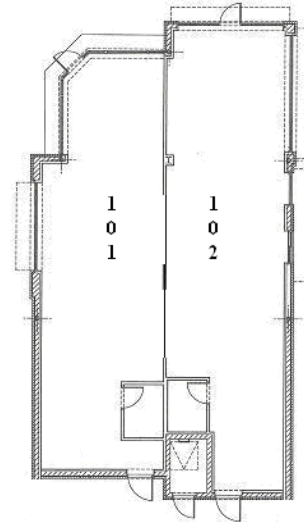


Shoppes of Addison II
1590 West Lake St.
Addison, IL
A GrecoReggi Properties Project



- 3,200 Sq. Ft. Retail Center
- Located at Lake St., (Rte.20) just west of Foxdale Dr., the north side of Lake Street
- Across from Marcus Theater

RETAIL SPACE AVAILABLE



RETAIL SPACE

<u>ADDRESS</u>	<u>SIZE</u>	<u>TENANT</u>
101	1,641	Starbucks Coffee
102	1,549	Lacey's Place

Shoppes of Addison II, - 3,200 sq. ft. retail center built in 2003. This upscale center is another stand out in the city's entertainment corridor. With a drive – through Starbucks, the center conveys a rare, synergistic feel. Busy center with great walking traffic.

DEMOGRAPHICS

POPULATION

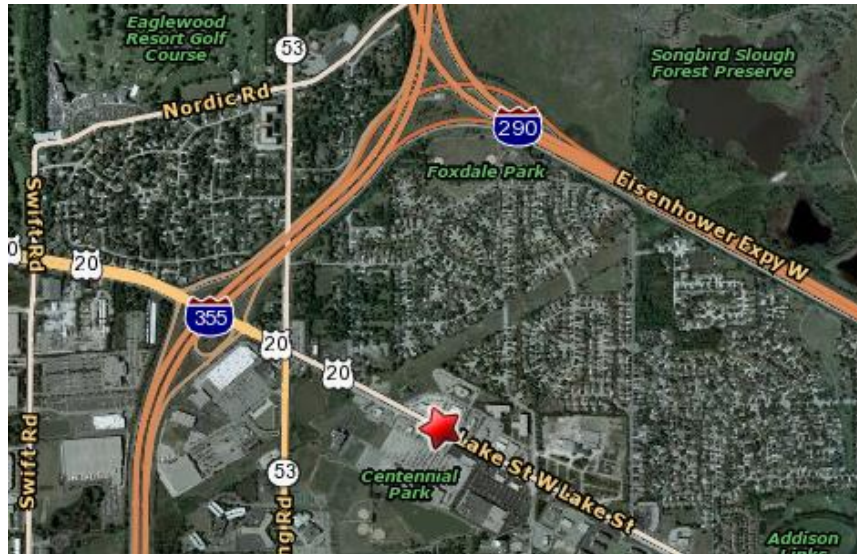
- 1 mile 11,328
- 3 mile 78,963
- 5 mile 252,151

NUMBER OF HOUSEHOLDS

- 1 mile 3,774
- 3 mile 27,806
- 5 mile 89,741

MEDIAN HOUSEHOLD INCOME

- 1 mile \$78,249
- 3 mile \$70,160
- 5 mile \$72,348



[CLICK HERE FOR MAP AND DIRECTIONS](#)

FOR MORE INFORMATION CONTACT

Leasing Management
 630-580-0372

Greco Reggi Addison II, LLC
 1301 Schiferl Rd., Bartlett, IL 60103
 P: 630-580-0372 F:630-221-0584

ebujak@grecoreggi.com