

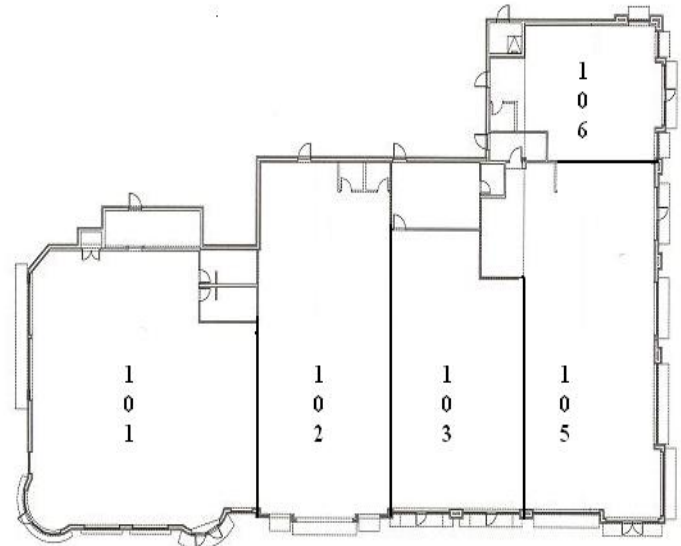
Shoppes of Addison I Retail Center
1600 W. Lake Street
Addison, IL 60101
A GrecoReggi Properties Project

GrecoReggi
 REAL ESTATE DEVELOPMENT CORP

RETAIL SPACE AVAILABLE



- 16,000 sq.ft. retail center
- Located at Lake St., (Rte.20) just west of Foxdale Dr., on the north side of Lake St.
- Across from Marcus Theaters



RETAIL SPACE

ADDRESS SIZE TENANT

101	4,893	Panera Bread
102	2,817	Rios Sud'America
103	1,438	Middle Terranean
104	1,489	UPS Store
105	3,746	Chase
106	1,532	Dr. Vitale

Shoppes of Addison I, - 16,000 sq. ft. retail center built in 2003. Located at 1600 West Lake Street in Addison's suburban entertainment district. Perfectly situated with frontage on high traffic road and easy access to all major expressways. Major tenants include Chase Bank, Panera Bread and is adjacent to Starbucks. Busy center with great walking traffic.

DEMOGRAPHICS

POPULATION

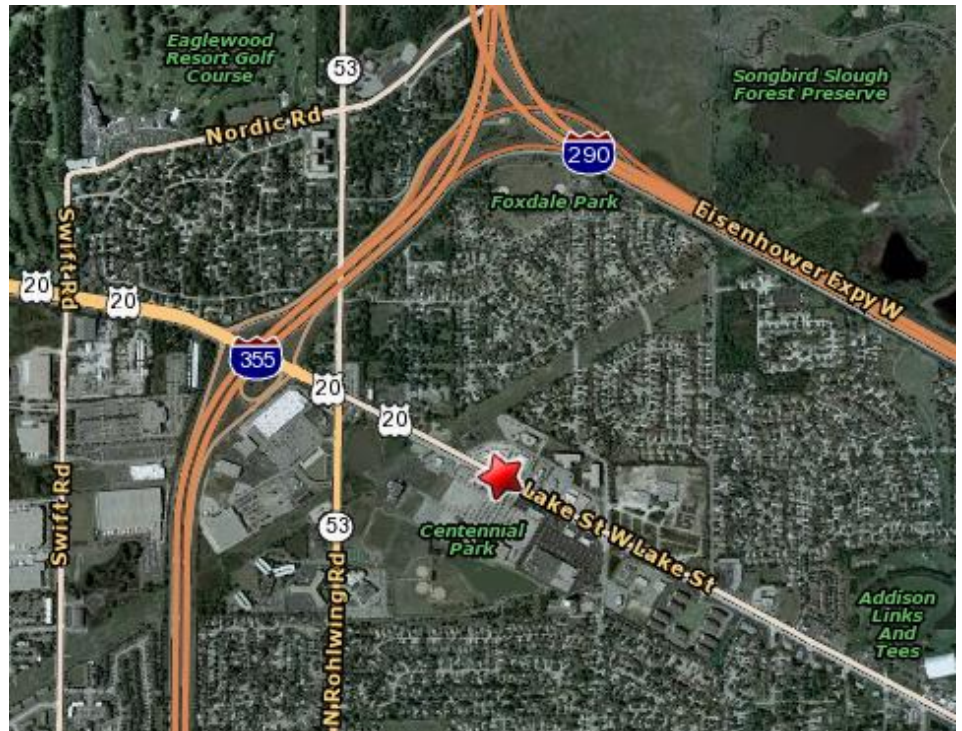
- 1 mile 11,143
- 3 mile 29,022
- 5 mile 251,783

NUMBER OF HOUSEHOLDS

- 1 mile 3,707
- 3 mile 27,819
- 5 mile 89,605

MEDIAN HOUSEHOLD INCOME

- 1 mile \$ 78,232
- 3 mile \$ 70,184
- 5 mile \$ 72,317



[CLICK HERE FOR MAP AND DIRECTIONS](#)

FOR MORE INFORMATION CONTACT

Leasing Management
 630-580-0372

Greco Reggi Addison I, LLC
 1301 Schiferl Rd., Bartlett, IL 60103
 P: 630-580-0372 F:630-221-0584