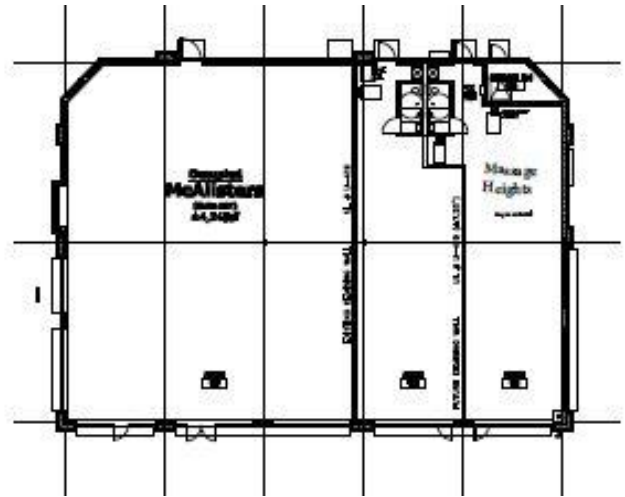


Inline Shoppes of Naperville II
2911 95th Street
Naperville, IL 60564
A GrecoReggi Properties Project

GrecoReggi
 REAL ESTATE DEVELOPMENT CORP

RETAIL SPACE AVAILABLE



- 7,317 sq. ft. Retail Center
- Location: 95th Street and Route 59
- High Traffic Center
- Great Anchor Stores

RETAIL SPACE

<u>2911 95th St</u>	<u>SIZE</u>	<u>TENANT</u>
101-103	3,007	Massage Heights
105-109	4,310	McAllister's Deli

Boasts approximately 7,300 sq. ft. This center was built in 2015 and is a powerhouse shopping experience. Major tenants include McAllister's Deli and Massage Heights. Busy Center with great walking traffic. We welcome you to view the site plan and building photos and call us with any questions you may have.

DEMOGRAPHICS

POPULATION

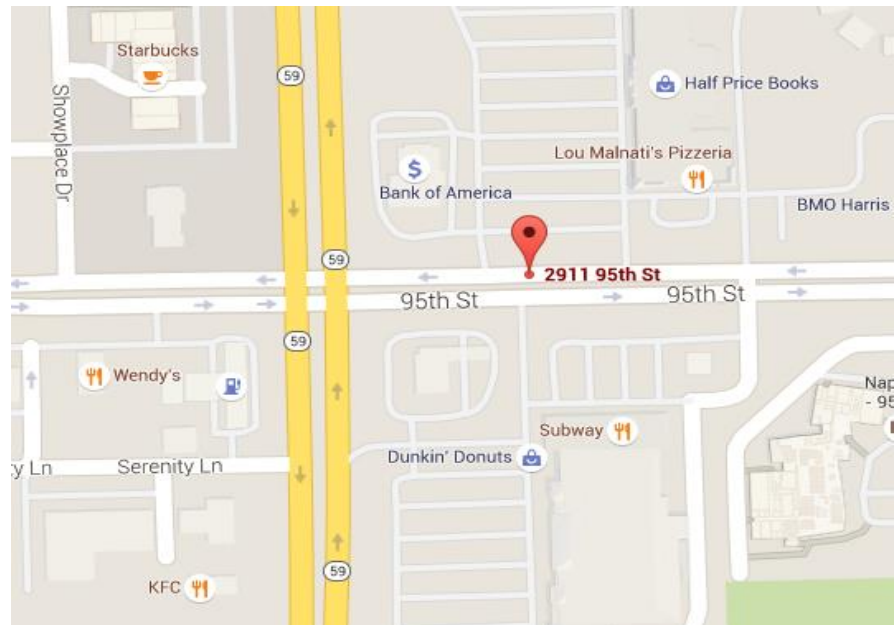
- 1 mile 8,670
- 3 mile 61,940
- 5 mile 153,933

NUMBER OF HOUSEHOLDS

- 1 mile 2,760
- 3 mile 19,182
- 5 mile 51,591

MEDIAN HOUSEHOLD INCOME

- 1 mile \$ 114,511
- 3 mile \$ 111,259
- 5 mile \$ 99,125



[CLICK HERE FOR MAP AND DIRECTIONS](#)

FOR MORE INFORMATION CONTACT

Property Manager
 Barry Reggi
 708-268-1323

Greco Reggi Development II, LLC
 1301 Schiferl Rd, Bartlett, IL 60103
 P: 630-580-0372 F: 630-221-0584

ebujak@grecoreggi.com